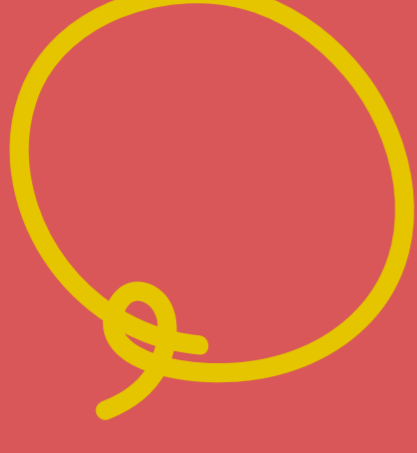


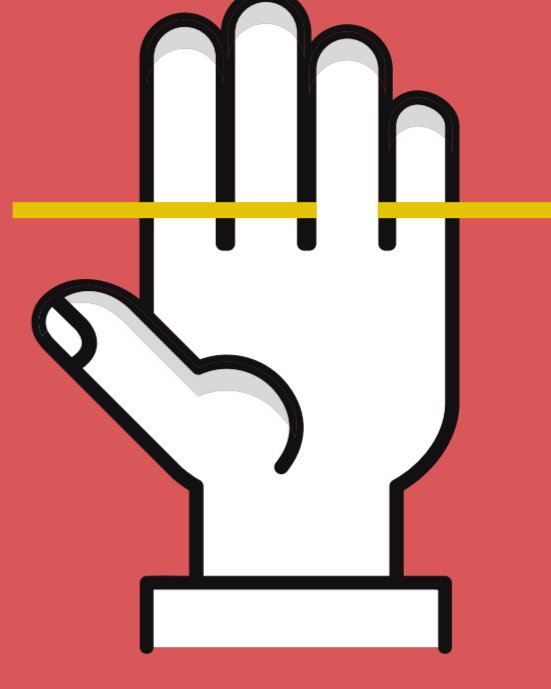
METHOD 1

Measure it with a thread

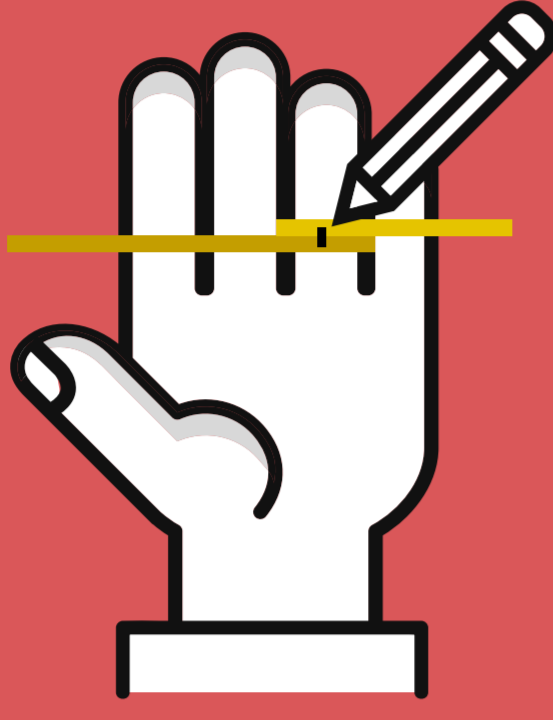
For measuring the size of your finger, you'll need a minimum paraphernalia including a thread, a marker and a scale. After measuring it by below mentioned method, you can determine your size with help of the chart given below.



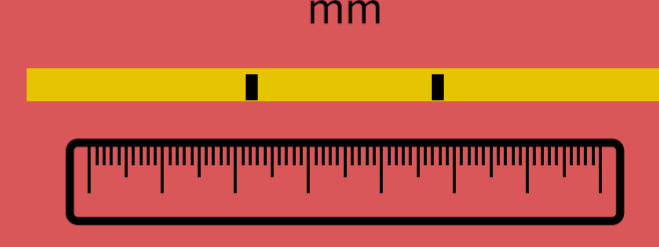
1. Cut a piece of thread.



2. Encircle the thread below the knuckle to make sure that ring easily fits that part.



3. Mark a point on the thread where the ends meet on your finger.



4. Measure the number of inches between two points.

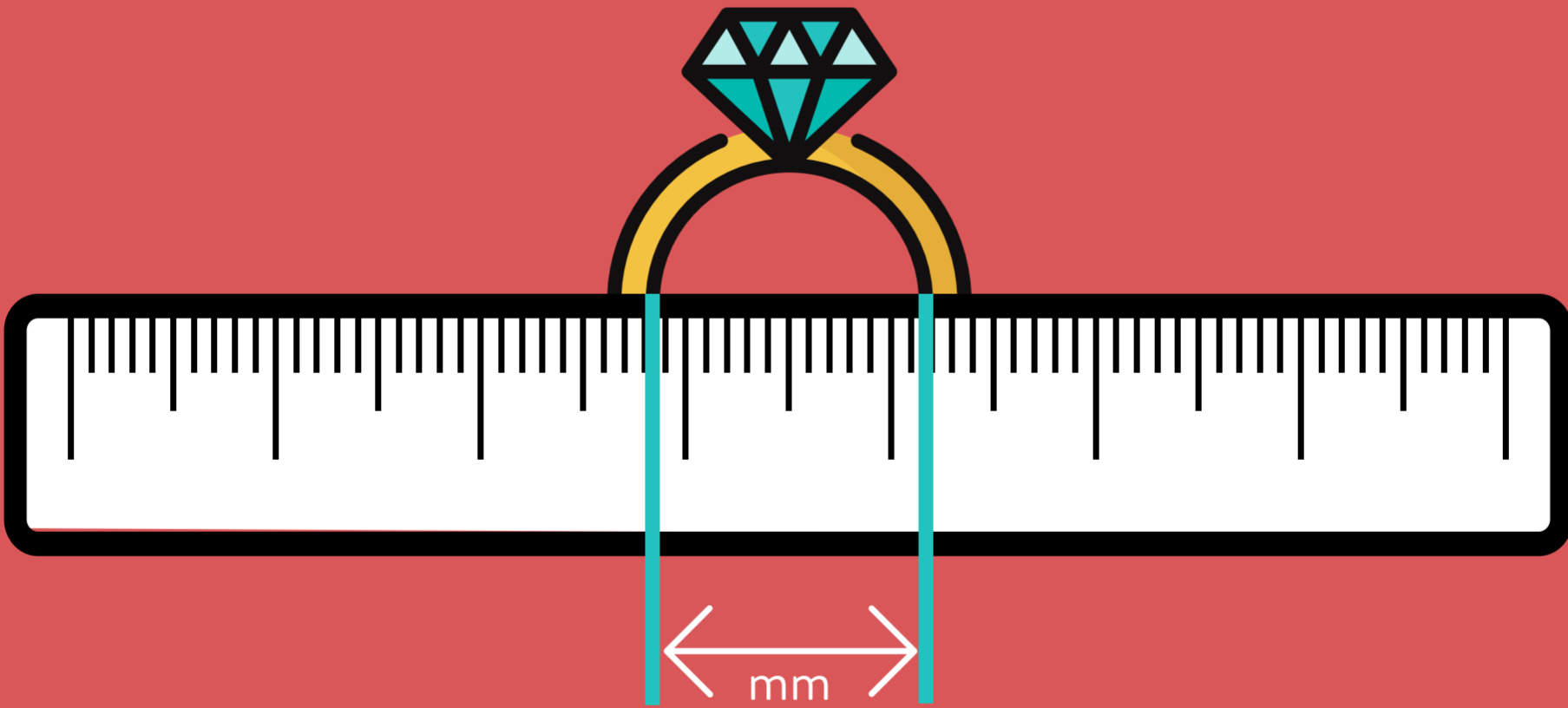
5. Refer to the chart provided below and determine your ring size.

RING SIZE	CIRCUMFERENCE (in mm)	RING SIZE	CIRCUMFERENCE (in mm)
6	45.9	19	59.1
7	47.1	20	60.0
8	48.1	21	60.9
9	49.0	22	61.9
10	50.0	23	62.8
11	50.9	24	63.8
12	51.8	25	64.7
13	52.8	26	66.0
14	54.0	27	66.9
15	55.0	28	67.9
16	55.9	29	69.1
17	56.9	30	70.1
18	57.8		

METHOD 2

Determine it with your ring

For knowing the accurate size of your finger, you will need just a scale and a ring of your own.



1. Position your ring on the scale.

2. Measure the inner diameter of your ring.

3. Measure in millimeters.

4. Refer to the chart provided below and determine your ring size.

RING SIZE	CIRCUMFERENCE (in mm)	RING SIZE	CIRCUMFERENCE (in mm)
6	14.6	19	18.8
7	15.0	20	19.1
8	15.3	21	19.4
9	15.6	22	19.7
10	15.9	23	20.0
11	16.2	24	20.3
12	16.5	25	20.6
13	16.8	26	21.0
14	17.2	27	21.3
15	17.5	28	21.6
16	17.8	29	22.0
17	18.1	30	22.3
18	18.4		

Titbits:

- If the measurements of your finger is between measurement two ring sizes, go for the larger size.
- Prefer a snug fit in order to ensure that ring does not slip off the finger.
- Warm your hands to room temperature in order to get the most accurate measurement.